

Attendance Access Control Terminal **DCN-PA15**

Facial recognition palm vein recognition attendance access control terminal



Face



Palm Vein



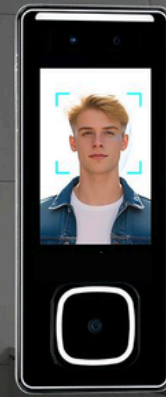
Attendance Management



Access Control



Wide Pose Angle Acceptance



DCN-PA15

DCN-PA15 is a smart access control terminal integrates leading facial recognition, palm vein recognition, and card verification technologies. It supports multiple identification methods, including combined facial/palm vein/card verification. It also features large storage capacity and high-speed verification capabilities.

The PA15 utilizes contactless biometric recognition (facial and palm vein) to effectively eliminate hygiene risks. Built-in advanced facial and palm vein anti-counterfeiting algorithms effectively protect against nearly all types of photo and video forgery attacks. Notably, its high-precision palm vein recognition delivers exceptionally fast authentication speeds, achieving authentication in single seconds, and supports both cloud-based and local comparison.

With a variety of Wiegand interfaces, the PA15 provides a secure, efficient, and convenient smart access control management experience.

Features

★Contactless Face & Palm Recognition:

·Secures identity verification using ambient light, eliminating physical contact.

★Enhanced Hygiene in Biometrics:

·Promotes health safety by removing the need for touch-based authentication.

★Intelligent Anti-Spoofing:

·Robustly defends against sophisticated forgery attempts, including:

·Photo Spoofing: Laser-printed, color, and black-and-white images.Video Replay Attacks: Pre-recorded video presentations.

·3D Imitation: High-fidelity masks.

★Standard NFC Card Compatibility:

·Supports 13.56MHz IC card authentication.

★Smart Palm Recognition Module:

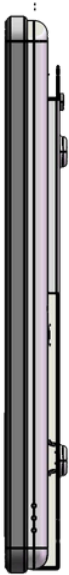
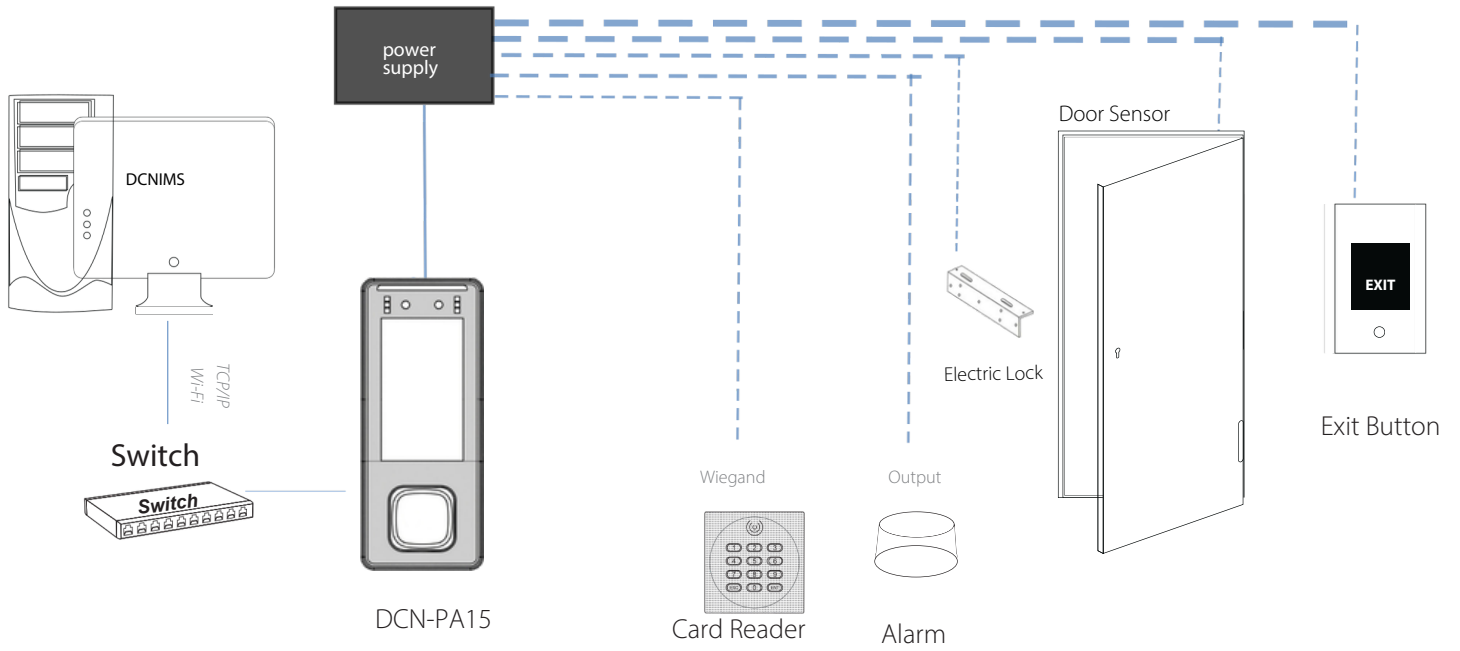
·Adaptive Performance: Operates reliably under diverse lighting conditions.

·Guided Recognition: Integrated multi-color LED indicators provide visual cues for seamless palm enrollment.

Specifications

| | |
|---|---|
| Model | DCN-PA15 |
| Display | 5" IPS Touch Screen (800*1280) |
| Camera | Face: 2MP; Plam Ve in Camera: RGB/IR |
| Operation System | Android 11 |
| Hardware | CPU: Quad Core 2.0Ghz RAM: 2G; ROM: 32G |
| Palm Vein Visual Indicator | Blue light: verification successful; White light: auxiliary fill light; Purple light: registration; Yellow light: verification failed; |
| Authentication Method | Face / Palm Vein/ Card |
| FaceTemplate Capacity | 50,000 (1:N) |
| Palm Ve inTemplate Capacity | 20,000 (1:N) for local |
| | Support half a million 1/2/..5 million, depends on server capacity |
| Card Capacity | 50,000 (1:N) |
| Biometric Authentication Speed | less than 1 sec (Facial Authentication) less than 1 sec (Palm Vein Authentication) |
| Touchless Biometric Authentication Distance | 0.5m to 4m (Facial Authentication) 5cm to 15cm (Palm Vein Authentication) |
| Card Type | IC Card@13.56 MHz |
| Power Supply | 12V DC |
| Operating Temperature | 10°C to 45°C |
| Operating Humidity | 10% to 90% RH (Non-condensing) |
| Communication | Wi-Fi (IEEE 802.1 a/b/g/n/ac) @2.4GHz ; 5GHz;TCP/IP Wiegand 26/34, Relay out(NC, NQCOM)RS485,Bluetooth, |
| Dimensions | 226.50*1 7.3*91mm |
| Gross Weight | 2 Kg |
| Net Weight | 0.6 Kg |
| Supported Software | DCNIMS Cloud Software |
| Installation | Wall-mount |

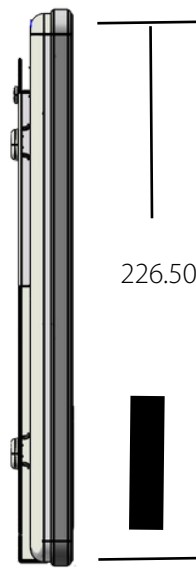
Configuration



17.3



91



226.50

