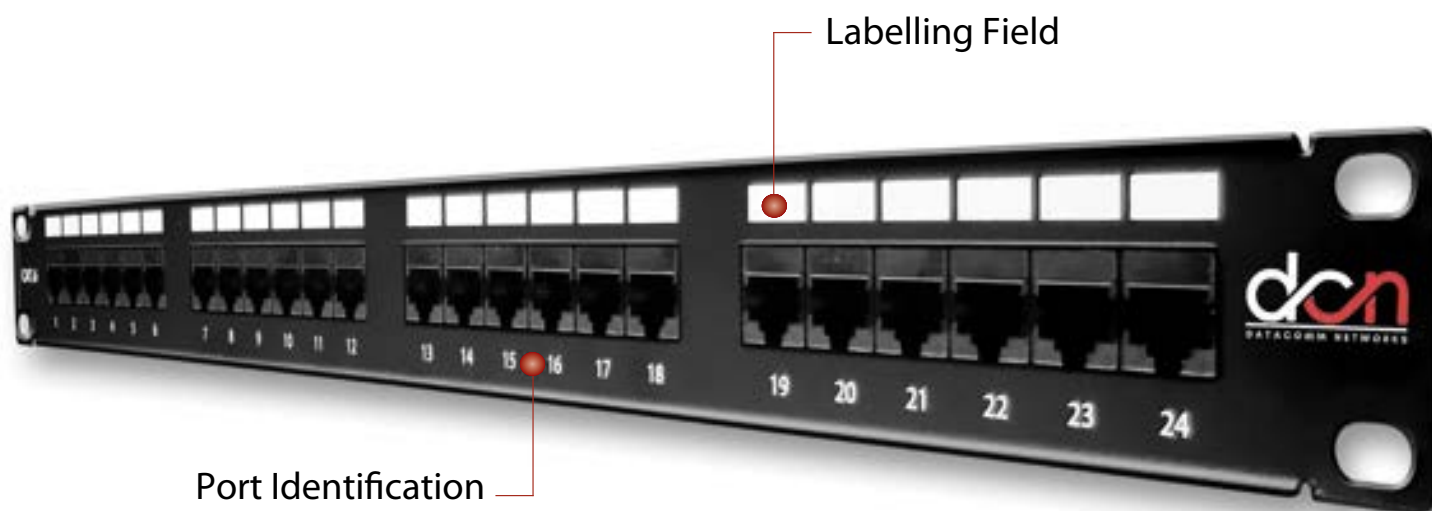


APPLICATION

The DATACOMM Cabling solution products have been designed for end-to-end category 6 UTP installations in both horizontal and backbone areas. The Datacomm Category 6 UTP high density patch panels are manufactured and tested to exceed Category 6 ANSI/TIA/EIA 586-B.2-10 component specifications for both link and channel performance requirements. This provides higher bandwidth to transmit data in excess of 250MHz to support present and emerging applications.

The DATACOMM 24 and 48 ports Cat 6 UTP patch panel for 19" racks. The Datacomm Cat6 UTP patch panels are designed to fit industry standard 19" cabinets. These fully compliant panels are simple to install and provide excellent performance at a great price.

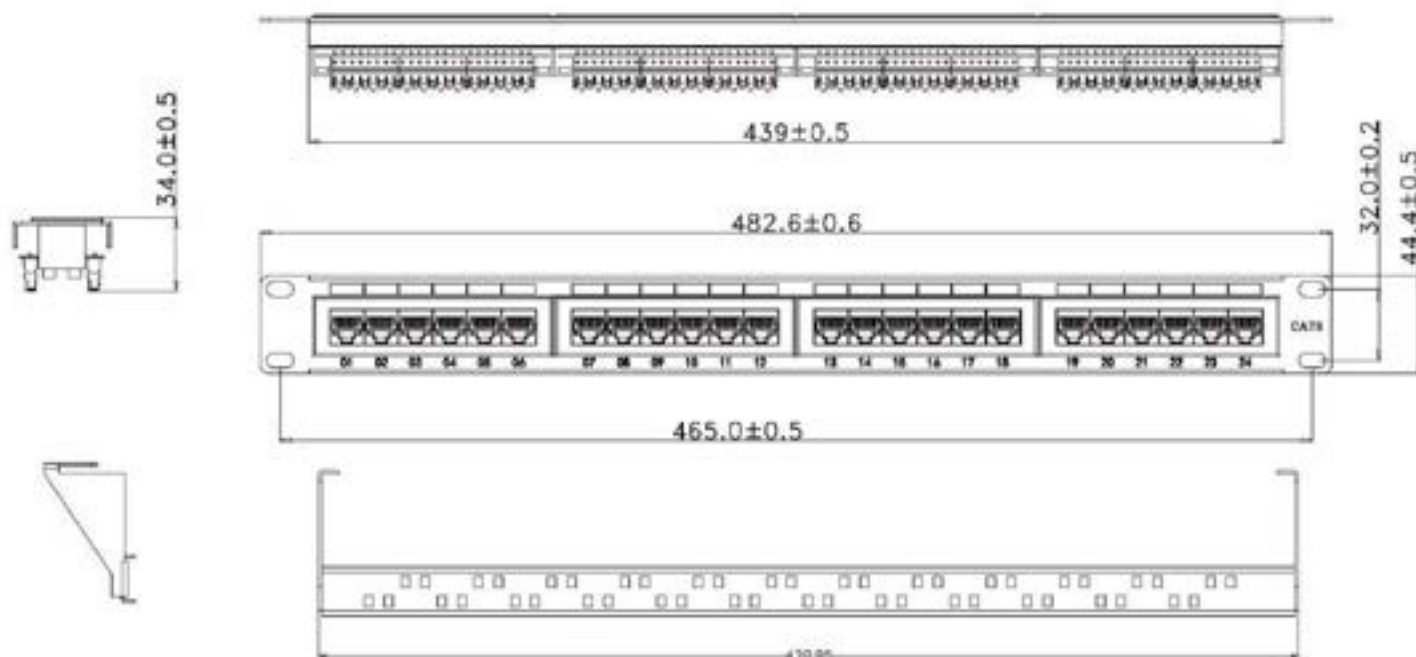


FEATURES

- Category 6 Compliant & Pyramid tested
- Universal T568A and T568B wiring configurations
- Available in 24 / 48 ports density
- Rear Cable Manager bar included
- LSA + Compatible connecting blocks
- Protected PCB
- 110 IDC Type

PRODUCT INFORMATION

Part Number	Product Description
DCN6-UTP-PP24	Datacomm Category 6 UTP 19" 24 Port Patch Panel
DCN6-UTP-PP48	Datacomm Category 6 UTP 19" 48 Port Patch Panel



STANDARDS

- ANSI/TIA/EIA-568-B.2-10 Category 6 component compliant

ELECTRICAL

1. CONTACT RESISTANCE: 20m OHM
2. INSULATION RESISTANCE: $\leq 250M$ OHM @100 V DC
3. WITHSTAND VOLTAGE: DC1000V AC700V RMS 60HZ, 1MIN
4. CAT6 PERMANENT LINK: CONFORM TO ANSI/TIA/EIA 568B.2-10

ENVIRONMENTAL

1. STORAGE: -40° / $+70^{\circ}$
2. OPERATION: -10° / $+60^{\circ}$

MECHANICAL

1. METAL MATERIAL: COLD ROLLED PLATE
2. IDC MATERIAL: NEW PC, ACCEPT 22-24AWG WIRE.
3. TERMINAL: PHOSPHOR BRONZE, TIN GOLD PLATING 50U"
4. RJ45 CONTACT LIFE: 750 TIMES MIN
5. IDC LIFE: 250 TIMES MIN